

Ixom Mount Maunganui Delivering Vital Ingredients for Manufacture

Community Safety

A Safety Case outlining the safe operation of the Ixom Mount Maunganui facility has been developed by Ixom and accepted by WorkSafe NZ. The Safety Case includes information on:

- Our facility arrangement and details
- Hazardous substances kept on site
- Safety, Health, Environment & Quality Management Systems
- Identifying hazards and controls through safety assessment
- Potential major incidents
- Consultation processes
- Emergency response processes

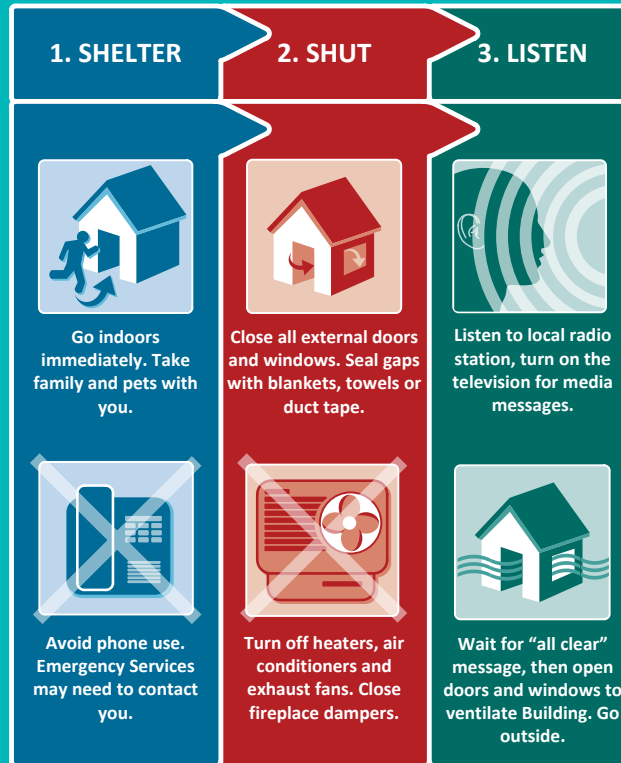
Although the likelihood of a major incident occurring at our facility is extremely low, it is important that we inform our local community of any potential incidents and what to do in the event that a major incident should occur. A chlorine gas release has been identified as a major incident that could affect the local community. Measures are in place to prevent, mitigate and manage all incidents.

In Case of a Major Incident

If it is considered that you could be affected, you will be directly notified.

- Premises near our facility (within 200m) will be advised by Ixom via SMS and/or phone.
- Emergency Services will most likely notify premises within the affected area (up to 1.5km from site) and if necessary advise required action, however as a safety precaution have a plan ready to action if needed.
- We suggest following Ixom on social media (@ixom Twitter or Ixom Global Facebook) to keep informed of relevant Emergency Services Alerts during an incident.

3 Steps to take in case of a chemical emergency:



Implement the 3 steps immediately if you can smell chlorine

Emergency Services: Fire, Police,
Ambulance:

111

Contacts and Information

For sales and product information, please call the Ixom Customer Service Centre on 0800 22 22 77. Follow us on Twitter (@ixom) and Facebook (IxomGlobal)

Ixom encourages enquires from anyone interested in learning more about the Ixom Mount Maunganui facility. If you would like more information, please contact the Site Leader, Graydon Gillingham on (07) 572 6820 or graydon.gillingham@ixom.com or visit us at our website www.ixom.com

We are located at:
166 Totara Street
Tauranga, 3182

Ixom Emergency Response
Service:

0800 734 607

IXOM

Community Safety Information

www.ixom.com



Ixom Operations Pty Ltd is the market leader in water treatment and chemical distribution in Australia and New Zealand, with a growing presence in Asia and Latin America. Ixom supplies general chemicals across a diverse range of markets.

These include agriculture, building and construction, food and beverage, dairy, pharmaceutical and personal care, plastics, pulp and paper, mining and water treatment industries.



Ixom Mount Maunganui

Ixom has been part of the Tauranga community since 1965 (under various names) and employs 85 people from the Tauranga area. The company's value of "We Do Things with Safety and Integrity" underpins the site's commitment to operating its production processes in a safe and efficient manner, ensuring that the surrounding environment and community are protected at all times.

The facility manufactures and stores a range of products in purpose-built manufacturing plants and storage locations. The products we produce and distribute are used in a variety of commercial and domestic applications:

- **Chlorine** – Disinfection of town water supplies, swimming pools and waste water
- **Hydrogen Peroxide** – Bleaching, sanitation, health products, hyde tanneries
- **Hydrochloric Acid 33%** – Manufacture of Poly Aluminium Chloride, pickling of steel, pH control
- **Sulphuric Acid 98%** – Manufacture of Aluminium Sulphate, pH control, battery fluid, food additive
- **Nitric Acid 64%** - Sanitation, cleaning
- **Phosphoric Acid** – Sanitation, cleaning, soaps, rust treatments, food additive
- **Sodium Hydroxide 50%** - Sanitation, cleaning, paper making, health products, food additive
- **Sodium Hypochlorite** – Bleaching, cleaning, sanitation
- **Sodium Hydrosulphide** – Chlorine gas removal

Information on Chlorine

- Ixom has safely distributed chlorine for over 90 years
- Chlorine has a distinctive odour, similar to household bleach. It is detectable at very low concentrations that are not dangerous. For example, bleach used in your laundry gives off around 1 part per million of chlorine. This odour warns us to avoid it before higher concentrations are encountered that could cause more serious problems.
- At low concentrations chlorine is not visible and will cause respiratory irritation, chest tightness and cause coughing.
- At high concentrations chlorine is toxic and visible as greenish-yellow gas.
- Chlorine gas is heavier than air and will tend to collect in depressions and low-lying areas.
- The area that may be affected by a chlorine release is highly dependent on the size of the release, the weather conditions, and the wind speed and direction.
- Whilst an emergency event is very unlikely, Ixom have in place rigorous emergency response procedures.
- You will be notified by Ixom or the Emergency Services if there is a need to respond.