

Ixom Hornby Delivering Vital Ingredients for Manufacture

Community Safety

A Safety Case outlining the safe operation of the Ixom Hornby facility has been developed by Ixom and accepted by WorkSafe NZ. The Safety Case includes information on:

- Our facility arrangement and details
- Hazardous substances kept on site
- Safety, Health, Environment & Quality Management Systems
- Identifying hazards and controls through safety assessment
- Potential major incidents
- Consultation processes
- Emergency response processes

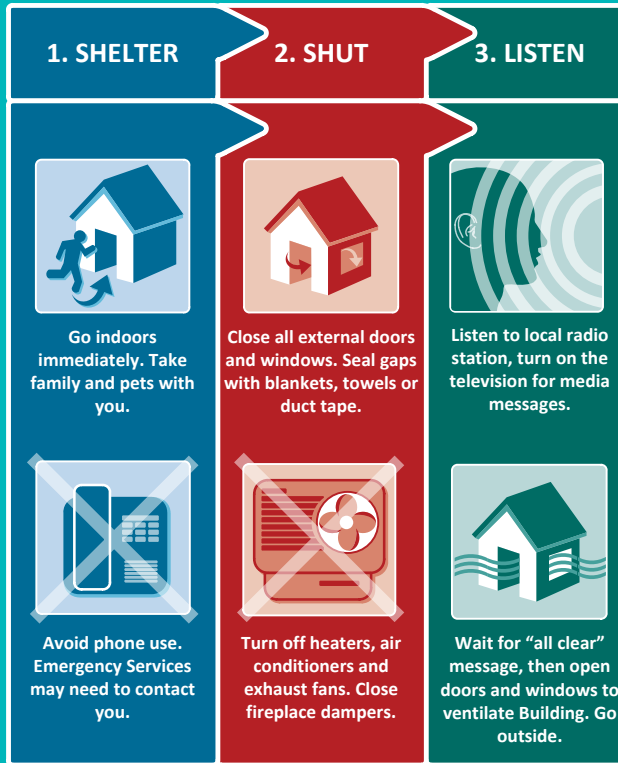
Although the likelihood of a major incident occurring at our facility is extremely low. It is important that we inform our local community of any potential incidents and what to do in the event that a major incident should occur. A chlorine gas release has been identified as a major incident that could affect the local community. Measures are in place to prevent, mitigate and manage all incidents.

In Case of a Major Incident

If it is considered that you could be affected, you will be directly notified.

- Premises near our facility (within 200m) will be advised by Ixom via SMS and/or phone.
- Emergency Services will most likely notify premises within the affected area (up to 1.5km from site) and if necessary advise required action, however as a safety precaution have a plan ready to action if needed.
- We suggest following Ixom on social media (@ixom Twitter or Ixom Global Facebook) and keep across relevant Emergency Services Alerts to keep you informed and aware during any incident.

3 Steps to take in case of a chemical emergency:



Implement the 3 steps immediately if you can smell chlorine

Emergency Services: Fire, Police,
Ambulance:

111

Ixom Emergency Response
Service:

0800 734 607

Contacts and Information

For sales and product information, please call the Ixom Customer Service Centre on 0800 22 22 77. Follow us on Twitter (@ixom) and Facebook (IxomGlobal)

Ixom encourages enquires from anyone interested in learning more about the Ixom Hornby facility. If you would like more information, please contact the Site Leader, John Guard on (03) 344 2811 or john.guard@ixom.com or visit us at our website www.ixom.com

We are located at:
135 – 147 Waterloo Road
Hornby Christchurch, 8042

IXOM

Community Safety Information

www.ixom.com



Ixom Operations Pty Ltd is the market leader in water treatment and chemical distribution in Australia and New Zealand, with a growing presence in Asia and Latin America. Ixom supplies general chemicals across a diverse range of markets.

These include agriculture, building and construction, food and beverage, dairy, pharmaceutical and personal care, plastics, pulp and paper, mining and water treatment industries.



Ixom Hornby

Ixom has been part of the Christchurch community since 1972 (under various names) and employs 11 people as part of the Christchurch operation. The company's value of "We Do Things with Safety and Integrity" underpins the site's commitment to operating its production processes in a safe and efficient manner, ensuring that the surrounding environment and community are protected at all times.

A wide range of industrial products, including materials listed below are stored and distributed throughout New Zealand from Ixom's purpose-built Hornby facility. The products held on the Hornby site are used in a variety of commercial and domestic applications:

- **Chlorine** – Disinfection of town water supplies, swimming pools and waste water
- **Hydrogen Peroxide** – Bleaching, sanitation, health products, hyde tanneries
- **Hydrochloric Acid 33%** – Manufacture of Poly Aluminium Chloride, pickling of steel, pH control
- **Anhydrous Ammonia** – Industrial refrigeration
- **Sulphuric Acid 77%** – Odour control, pH control
- **Phosphoric Acid** – Sanitation, cleaning, soaps, rust treatments, food additive
- **Sodium Hydroxide** - Sanitation, cleaning, paper making, health products, food additive
- **Sodium Hypochlorite** – Bleaching, cleaning, sanitation
- **Sodium Chlorite Solution** – Oxidising agent
- **Industrial Solvents** – Commercial and industrial cleaning
- **Industrial Resins** – Foundry's, mould setting

Information on Chlorine

- Ixom has safely distributed chlorine for over 90 years
- Chlorine has a distinctive odour, similar to household bleach. It is detectable at very low concentrations that are not dangerous. For example, bleach used in your laundry gives off around 1 part per million of chlorine. This odour warns us to avoid it before higher concentrations are encountered that could cause more serious problems.
- At low concentrations chlorine is not visible and will cause respiratory irritation, chest tightness and cause coughing.
- At high concentrations chlorine is toxic and visible as greenish-yellow gas.
- Chlorine gas is heavier than air and will tend to collect in depressions and low-lying areas.
- The area that may be affected by a chlorine release is highly dependent on the size of the release, the weather conditions, and the wind speed and direction.
- Whilst an emergency event is very unlikely, Ixom have in place rigorous emergency response procedures.
- You will be notified by Ixom or the Emergency Services if there is a need to respond.